

AZEETA®

Complete Thermoplastic Piping System

HDPE

Socket Fusion & Electrofusion Piping System

MS 1058, BS EN 12201, SIRIM 9



Your Complete Thermoplastic
Piping System Solution

Listed by

SPAN



Ver. 2

Why Choose

AZEE7A®

We pride ourselves in taking part into the success stories of our customers since 1997, with our high-level services and attention to detail in assisting our customers. On top of that, our standard of service aims to exceed customer's expectation. We offer competitive prices, responsive and professional customer service, on time delivery and excellent product quality to all our customers to write the long lasting success stories together.



Established in 1997

Our long history of 25 years in the market has given us the advantage of having vast experience in manufacturing and serving the thermoplastic piping system customers.

Compliant with regulatory requirements

Our product are approved by SIRIM and SPAN to ensure compliance with regulatory body guidelines and standard.

Professional Technical Support

Our vast experience and understanding in every aspect of the product enables us to respond to all enquiry from chemical compatibility to general advice on product placement in the project.

Dedicated Sales and Marketing Team

There is no best time to contact our dedicated sales and marketing team, when there is a question, we will provide an answer!

Hands-On Training

Our systematic installation training covers from demonstration, hands-on training to supervising on site installation procedure to ensure post installation job quality always meet the expectations.

HDPE Socket Fusion & Electrofusion Piping System

The durability, economical, and ecological advantages of HDPE piping system has resulted in the product being used for an increasing number of diverse applications in recent years. Coupled together with Fusion joint reliability, the system provides better assurance and leak-free performance. The socket fusion and electrofusion joining methods have become common and widely used especially for smaller pipe diameters.

- ✔ Flexible, reliable and affordable
- ✔ Non-Leaching
- ✔ UV Resistant
- ✔ Resistant to most Chemicals
- ✔ Excellent to water hammer
- ✔ Amazing Durability
- ✔ High Versatility

Manufacturing Standard

Azeeta HDPE pipes and fittings are manufactured in accordance with the following standard:

Pipe MS 1058 | Fitting BS EN 12201 | Valve Sirim 9

Summary Pipe and Fitting Testing Requirement

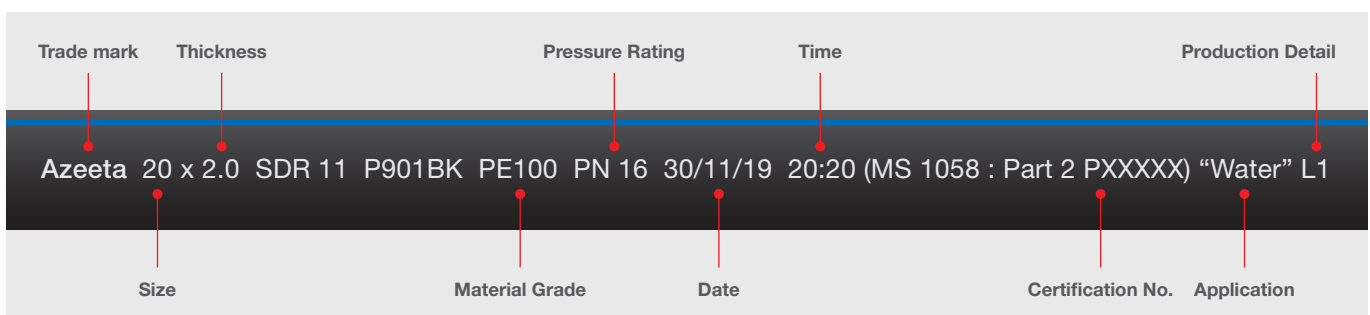
*Appearance, color, dimension and marking comply to the above standard.

Characteristic	Sample Type	Standard Test Requirement		Test Method	Test Result
Hydrostatic Test at 80 °C	Pipe/Fitting	Period PE 100	165 hours 5.4 Mpa	EN 921	Sample withstand the test pressure without any failure
Oxidation Induction Time (OIT), min (Thermal stability)	Pipe/Fitting	Temperature	200 °C	EN 728	≥ 20 min
Melt mass-flow rate (MFR), g/10 min	Fitting	Load Temperature	5.0 kg 190 °C	ISO 1133	Change of MFR by processing ± 20%

Pipe Dimension Table

Outside Diameter (mm)	PN10 (SDR 17)			PN12.5 (SDR 13.6)			PN16 (SDR 11)		
	Internal Diameter (mm)	Weight (Kg/m)	Min Wall Thickness (mm)	Internal Diameter (mm)	Weight (Kg/m)	Min Wall Thickness (mm)	Internal Diameter (mm)	Weight (Kg/m)	Min Wall Thickness (mm)
20	-	-	-	-	-	-	16	0.12	2.0
25	-	-	-	21	0.15	2.0	20	0.17	2.3
32	28	0.19	2.0	27	0.24	2.4	26	0.28	3.0
40	35	0.29	2.4	34	0.36	3.0	33	0.43	3.7
50	44	0.45	3.0	43	0.54	3.7	41	0.66	4.6
63	55	0.71	3.8	54	0.87	4.7	51	1.05	5.8
75	66	1.01	4.5	64	1.23	5.6	61	1.46	6.8
90	79	1.45	5.4	77	1.76	6.7	74	2.12	8.2
110	97	2.15	6.6	94	2.60	8.1	90	3.14	10.0
160	141	4.56	9.5	136	5.56	11.8	131	6.73	14.6
180	159	5.76	10.7	153	7.05	13.3	147	8.51	16.4
200	176	7.11	11.9	171	8.65	14.7	164	10.50	18.2
225	196	9.02	13.4	192	10.98	16.6	184	13.29	20.5
250	220	11.06	14.8	213	13.53	18.4	205	16.34	22.7
315	278	17.59	18.7	269	21.48	23.2	258	25.93	28.6
355	310	22.39	21.1	299	27.24	26.1	286	32.92	32.2
400	350	28.29	23.7	337	34.54	29.4	322	41.79	36.3
450	394	35.85	26.7	380	43.75	33.1	363	52.92	40.9

Pipe Marking



Note: It is highly recommended to use only straight pipe for socket fusion jointing. Coiled pipes will not be able to maintain the pipe ovality.

Pipe Stiffener

The stiffener is designed to support the internal wall of HDPE pipe when heating the pipe. The use of this stiffener is for pipe with thickness less than 3mm or for pipe 20mm to 32mm only. Please refer to the jointing method. The main function of stiffener is to prevent the collapsing of pipe wall while fusing the pipe and fitting together.

Size	PN16
20	✓
25	✓



Socket Fusion Machine

Azeeta PE socket fusion machine is specially designed to meet the contractor and plumber requirement. It is easy to use, reliable and long lasting.

It is available in size from 20mm to 63mm and 75mm to 110mm.

Anti-Slip Female Elbow

The final piping point on threaded fittings is the metal thread transition to be connected with other tapping parts. The threaded metal insert embedded inside the fitting however may “slip” or be “twisted” between the plastic body under excessive tightening force. If this occurs, water may sip through in between the loose gap.

In order to avoid this, the metal insert has been designed with an extended holding position over the large elbow contact areas in opposing twist direction. This offers a “One Piece” design to achieve the Anti-Slip feature.



HDPE Pipes & Fittings

Product List

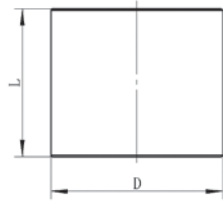
Size (mm)	PE100 PN10 (SDR 17)			PE100 PN12.5 (SDR 13.6)			PE100 PN16 (SDR 11)		
	Product Code	Length 5.8m	Roll 100m	Product Code	Length 5.8m	Roll 100m	Product Code	Length 5.8m	Roll 100m
20	-			-			21-P16-020	✓	✓
25	-			21-P12-025	✓	✓	21-P16-025	✓	✓
32	21-P10-032	✓		21-P12-032	✓	✓	21-P16-032	✓	✓
40	21-P10-040	✓		21-P12-040	✓	✓	21-P16-040	✓	✓
50	21-P10-050	✓		21-P12-050	✓	✓	21-P16-050	✓	✓
63	21-P10-063	✓		21-P12-063	✓	✓	21-P16-063	✓	✓
75	21-P10-075	✓		21-P12-075	✓		21-P16-075	✓	
90	21-P10-090	✓		21-P12-090	✓		21-P16-090	✓	
110	21-P10-110	✓		21-P12-110	✓		21-P16-110	✓	
160	21-P10-160	✓		21-P12-160	✓		21-P16-160	✓	
180	21-P10-180	✓		21-P12-180	✓		21-P16-180	✓	
200	21-P10-200	✓		21-P12-200	✓		21-P16-200	✓	
225	21-P10-225	✓		21-P12-225	✓		21-P16-225	✓	
250	21-P10-250	✓		21-P12-250	✓		21-P16-250	✓	
315	21-P10-315	✓		21-P12-315	✓		21-P16-315	✓	
355	21-P10-355	✓		21-P12-355	✓		21-P16-355	✓	
400	21-P10-400	✓		21-P12-400	✓		21-P16-400	✓	
450	21-P10-450	✓		21-P12-450	✓		21-P16-450	✓	

*SPAN requires PN12 minimum for plastic pipes.

Product List

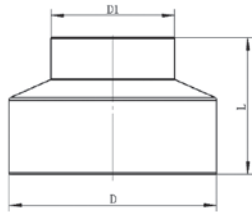
Socket Fusion Fittings & Tools

EQUAL SOCKET



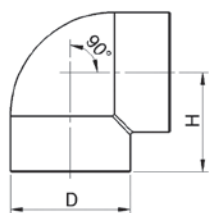
Code	Size	D	L
21-ESP-020	20x20	28	35
21-ESP-025	25x25	34	38
21-ESP-032	32x32	42	42
21-ESP-040	40x40	52	48
21-ESP-050	50x50	64	55
21-ESP-063	63x63	80	63
21-ESP-075	75x75	92	70
21-ESP-090	90x90	110	78
21-ESP-110	110x110	134	88

REDUCING SOCKET



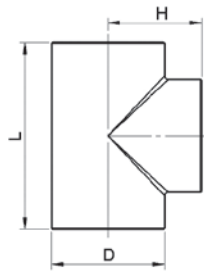
Code	Size	D	D1	L
21-RSP-025020	25x20	34	28	38
21-RSP-032020	32x20	42	28	42
21-RSP-032025	32x25	42	34	42
21-RSP-040020	40x20	52	28	48
21-RSP-040025	40x25	52	34	48
21-RSP-040032	40x32	52	42	48
21-RSP-050020	50x20	64	28	55
21-RSP-050025	50x25	64	34	55
21-RSP-050032	50x32	64	42	55
21-RSP-050040	50x40	64	52	55
21-RSP-063020	63x20	80	28	63
21-RSP-063025	63x25	80	34	63
21-RSP-063032	63x32	80	42	63
21-RSP-063040	63x40	80	52	63
21-RSP-063050	63x50	80	64	63
21-RSP-075025	75x25	92	34	70
21-RSP-075032	75x32	92	42	70
21-RSP-075040	75x40	92	52	70
21-RSP-075050	75x50	92	73	70
21-RSP-075063	75x63	92	80	70
21-RSP-090050	90x50	110	64	78
21-RSP-090063	90x63	110	80	78
21-RSP-090075	90x75	110	92	78
21-RSP-110063	110x63	134	80	88
21-RSP-110075	110x75	134	92	88
21-RSP-110090	110x90	134	110	88

EQUAL ELBOW



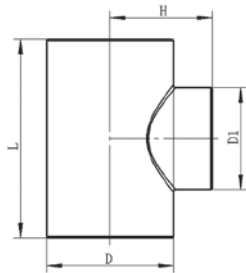
Code	Size	D	H
21-EEP-020	20x20	28	26
21-EEP-025	25x25	34	33
21-EEP-032	32x32	42	43
21-EEP-040	40x40	52	48
21-EEP-050	50x50	64	56
21-EEP-063	63x63	80	61
21-EEP-075	75x75	92	74
21-EEP-090	90x90	110	80
21-EEP-110	110x110	134	100

EQUAL TEE



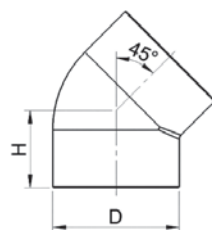
Code	Size	D	L	H
21-ETP-020	20x20x20	28	56	28
21-ETP-025	25x25x25	34	64	32
21-ETP-032	32x32x32	42	76	38
21-ETP-040	40x40x40	52	90	45
21-ETP-050	50x50x50	64	106	53
21-ETP-063	63x63x63	80	28	64
21-ETP-075	75x75x75	92	146	73
21-ETP-090	90x90x90	110	168	84
21-ETP-110	110x110x110	134	200	100

REDUCING TEE



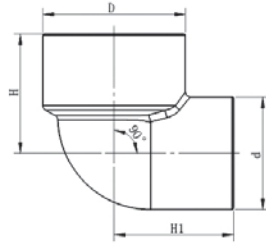
Code	Size	D	D1	L	H
21-RTP-025020	25x20x25	34	28	58	30
21-RTP-032020	32x20x32	42	28	36	34
21-RTP-032025	32x25x32	42	34	68	35
21-RTP-040020	40x20x40	52	28	70	39
21-RTP-040025	40x25x40	52	34	75	40
21-RTP-040032	40x32x40	52	42	82	42
21-RTP-050020	50x20x50	64	28	76	45
21-RTP-050025	50x25x50	64	34	81	46
21-RTP-050032	50x32x50	64	42	88	48
21-RTP-050040	50x40x50	64	52	96	50
21-RTP-063020	63x20x63	80	28	85	54
21-RTP-063025	63x25x63	80	34	90	55
21-RTP-063032	63x32x63	80	42	97	56
21-RTP-063040	63x40x63	80	52	105	58
21-RTP-063050	63x50x63	80	64	115	60
21-RTP-075025	75x25x75	92	34	98	61
21-RTP-075032	75x32x75	92	42	105	62
21-RTP-075040	75x40x75	92	52	113	64
21-RTP-075050	75x50x75	92	64	123	66
21-RTP-075063	75x63x75	92	80	136	70
21-RTP-090032	90x32x90	110	42	112	71
21-RTP-090040	90x40x90	110	52	120	73
21-RTP-090050	90x50x90	110	64	130	76
21-RTP-090063	90x63x90	110	80	143	80
21-RTP-090075	90x75x90	110	92	153	82
21-RTP-110050	110x50x110	134	64	141	88
21-RTP-110063	110x63x110	134	80	154	92
21-RTP-110075	110x75x110	134	92	166	94
21-RTP-110090	110x90x110	134	110	180	96

ELBOW 45°



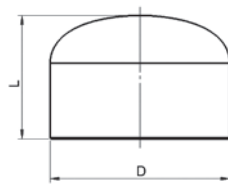
Code	Size	D	H
21-E45-020	20x45°	28	28
21-E45-025	25x45°	34	32
21-E45-032	32x45°	42	34
21-E45-040	40x45°	52	38
21-E45-050	50x45°	64	43
21-E45-063	63x45°	80	56
21-E45-075	75x45°	92	65
21-E45-090	90x45°	110	75
21-E45-110	110x45°	134	110

REDUCING ELBOW



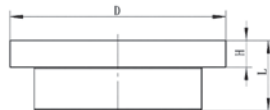
Code	Size	D	d	H	H1
21-REP-025020	25x20	34	28	31	33
21-REP-032020	32x20	42	28	33	37
21-REP-032025	32x25	42	34	36	38
21-REP-040025	40x25	52	42	48	40

END CAP



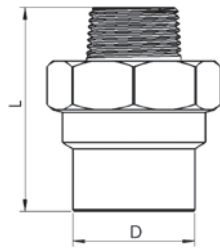
Code	Size	D	L
21-ECP-020	20	28	25
21-ECP-025	25	34	27
21-ECP-032	32	42	33
21-ECP-040	40	52	38
21-ECP-050	50	64	44
21-ECP-063	63	80	51
21-ECP-075	75	92	57
21-ECP-090	90	110	63
21-ECP-110	110	134	72

FLANGE ADAPTOR (SOCKET)



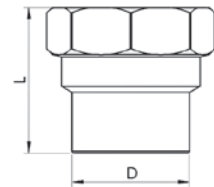
Code	Size	D	L	H
21-SEF-040	40	78	52	35
21-SEF-050	50	88	64	40
21-SEF-063	63	102	80	42
21-SEF-075	75	122	91	44
21-SEF-090	90	138	107	45
21-SEF-110	110	158	133	50

MALE SOCKET



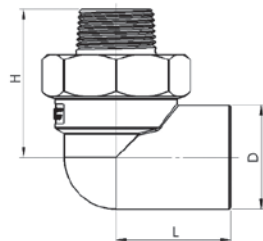
Code	Size	D	L
21-MTA-20x1/2"	20x1/2"	28	52
21-MTA-25x1/2"	25x1/2"	34	55
21-MTA-25x3/4"	25x3/4"	34	56
21-MTA-32x3/4"	32x3/4"	42	60
21-MTA-32x1"	32x1"	42	61
21-MTA-40x1 1/4"	40x1 1/4"	52	67
21-MTA-50x1 1/2"	50x1 1/2"	64	74
21-MTA-63x2"	63x2"	80	90
21-MTA-75x2 1/2"	75x2 1/2"	92	107
21-MTA-90x3"	90x3"	110	127
21-MTA-110x4"	110x4"	134	138

FEMALE SOCKET



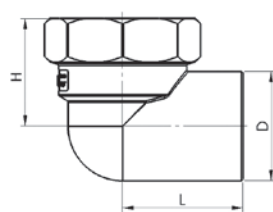
Code	Size	D	L
21-FTA-20x1/2"	20x1/2"	28	41
21-FTA-20x3/4"	20x3/4"	28	43
21-FTA-25x1/2"	25x1/2"	34	43
21-FTA-25x3/4"	25x3/4"	34	43
21-FTA-32x3/4"	32x3/4"	42	45
21-FTA-32x1"	32x1"	42	46
21-FTA-40x1 1/4"	40x1 1/4"	52	48
21-FTA-50x1 1/2"	50x1 1/2"	64	54
21-FTA-63x2"	63x2"	80	72

MALE ELBOW



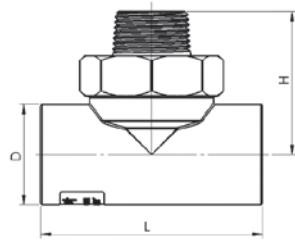
Code	Size	D	L	H
21-MTE-20x1/2"	20x1/2"	28	27	47
21-MTE-20x3/4"	20x3/4"	28	27	48
21-MTE-25x1/2"	25x1/2"	34	31	48
21-MTE-25x3/4"	25x3/4"	34	36	55
21-MTE-32x3/4"	32x3/4"	42	40	55
21-MTE-32x1"	32x1"	42	40	60

FEMALE ELBOW



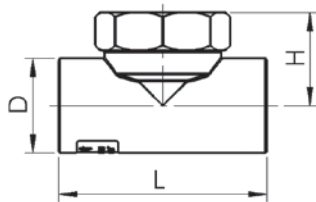
Code	Size	D	L	H
21-FTE-20x1/2"	20x1/2"	28	27	34
21-FTE-20x3/4"	20x3/4"	28	28	34
21-FTE-25x1/2"	25x1/2"	34	32	36
21-FTE-25x3/4"	25x3/4"	34	32	36
21-FTE-32x3/4"	32x3/4"	42	37	40
21-FTE-32x1"	32x1"	42	41	48

MALE TEE



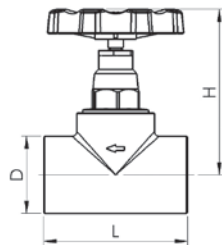
Code	Size	D	L	H
21-MTT-20x1/2"	20x1/2"x20	28	62	47
21-MTT-25x1/2"	25x1/2"x25	34	64	48
21-MTT-25x3/4"	25x3/4"x25	34	72	55
21-MTT-32x3/4"	32x3/4"x32	42	76	55
21-MTT-32x1"	32x1"x32	42	84	63

FEMALE TEE



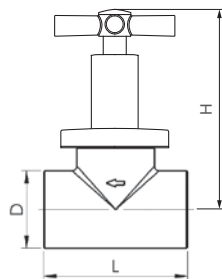
Code	Size	D	L	H
21-FTT-20x1/2"	20x1/2"x20	28	62	34
21-FTT-25x1/2"	25x1/2"x25	34	70	36
21-FTT-25x3/4"	25x3/4"x25	34	75	36
21-FTT-32x3/4"	32x3/4"x32	42	82	46
21-FTT-32x1"	32x1"x32	42	82	46

STOP VALVE



Code	Size	D	L	H
21-STV-020	20	28	75	75
21-STV-025	25	34	80	80
21-STV-032	32	42	86	86
21-STV-040	40	52	98	97
21-STV-050	50	64	103	110
21-STV-063	63	80	114	127

CHROME HANDLE STOP VALVE



Code	Size	D	L	H
21-CV2-020	20	28	75	100
21-CV2-025	25	34	80	105
21-CV2-032	32	42	86	111
21-CV2-040	40	52	98	122

WELDING MACHINE

Code



21-MAC-020032
 21-MAC-020063
 21-MAC-075110

HEATING BUSHES

Code



21-HBS-020
 21-HBS-025
 21-HBS-032
 21-HBS-040
 21-HBS-050
 21-HBS-063
 21-HBS-075
 21-HBS-090
 21-HBS-110

WELDING STICK

Code



21-WPS-007011

WELDING REPAIR SOCKET TOOL

Code



21-WPS-007
 21-WPS-011

SINGLE-RING STIFFENERS

Code



21-PSS-20PN16
 21-PSS-25PN16

Installation Procedures



Cut

Cut pipe square and chamfer the inside and outside of the pipe.



Stiffener

Insert the stiffener into the pipe.



Cleaning the pipe and fitting

Clean the inner surface of the fitting and the outer surface of the pipe. Both surfaces should be free from any dirt, grease or cracks as the presence of any of these can affect the quality of weld.



Marking and machine

Mark the required insertion depth. Select the right heating bush and ensure the heating bush has achieved the required fusion temperature.



Heating the pipe and fitting

Push the pipe and fitting into the heating bush. After the pipe and fitting have reached the required heating time, remove the pipe and fitting immediately.



Fusion and joint inspection

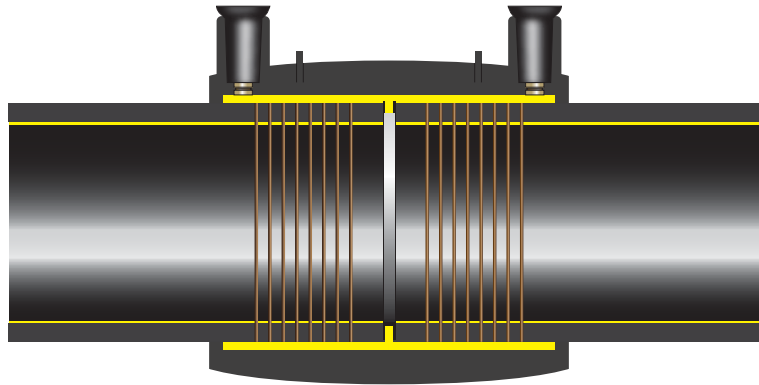
Fuse the pipe & fitting by pushing them together until the pipe reached the insert depth. DO NOT TWIST THE JOIN WHILE FUSING. Hold the joint until the fusion time lapse. Do not move or disturb the joint until it has fully cool down. Visually inspect the joint to ensure that continuous fusion seam is formed around the pipe circumference.

Processing Parameters

Pipe Size (mm)	Welding Depth (mm)	Heating Time (s)	Fusion Time (s)	Cooling Time (m)
20	13	6	4	2
25	15	7	4	3
32	17	8	6	4
40	19	12	6	4
50	21	18	6	5
63	25	25	8	6
75	27	30	8	8
90	30	40	10	8
110	34	50	10	8

HDPE Electrofusion System

Product Standard : MS 1058-3 : 2005 & BS EN 12201-3 : 2011+A1 : 2012



Electrofusion fittings are used in the connection between HDPE pipes carrying fluids. It is one of the jointing methods allowed by the MS1058 and BS EN 12201 standards apart from the socket fusion, butt fusion and mechanical compression joint methods. To some, PE electrofusion jointing is the most advanced and reliable PE fusion jointing method, especially when it involves large bore pipes. This is due to its ease of jointing and the jointing job can be done under controlled condition.

Azeeta electrofusion fittings comply to the MS 1058 and BS EN 12201 standards' requirements. All fittings undergo the stringent initial type test and batch release tests as stipulated in the respective standards. Our products are also certified by SPAN for usage in the Malaysia water and sewerage application. The electrofusion fittings come in various types and sizes, and are all rated PN16. The size ranges between d20 up to d315. Azeeta electrofusion fittings are of high quality, easy to install and provides a very reliable joint.

How It Works

Pipes are easily assembled with fittings. It is mounted together with the help of electrofusion welding machine. Electrofusion welding can be done easily and can be achieved in a short time. Pipes are inserted into the openings of the fittings. The electrofusion welding machine is then activated, electric is converted into heat and channelled along the heating wires embedded in the body of the fittings. These wires are spaced evenly during the manufacturing process. The heat will melt the surfaces of the pipes and fittings and the molten material will fuse together, creating an homogenous joint.

The correct heating temperature and timing are stored in the barcode which can be found on each electrofusion fitting. Installer will just need to scan the barcode using the scanner attached to the electrofusion machine. Finally, an indicator on the fitting will show that the joints have been made properly. The joints are then left to cool down before putting it into service.

Things To Take Care During Installation

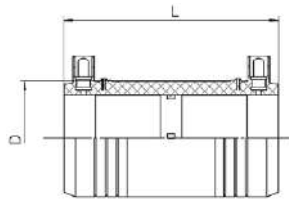
To achieve a good quality join, the following steps have to be ensured.

- Sufficient Cleaning at the contact zone of pipe & fitting
- Sufficient Peeling or Scraping at the pipe contact zone with the fitting
- Sufficient Pipe Insertion into the Fitting
- Proper Pipe & Fitting alignment and fitness

Product List

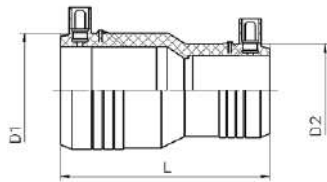
Electrofusion Fittings & Tools

EQUAL SOCKET



Code	Size	D	L
21-EFES-063	63x63	80	120
21-EFES-075	75x75	94	129
21-EFES-090	90x90	110	139
21-EFES-110	110x110	136	148
21-EFES-125	125x125	153	159
21-EFES-160	160x160	195	178
21-EFES-180	180x180	225	208
21-EFES-200	200x200	243	197
21-EFES-225	225x225	276	201
21-EFES-250	250x250	295	215
21-EFES-315	315x315	377	236
21-EFES-355	355x355	428	275
21-EFES-400	400x400	474	300

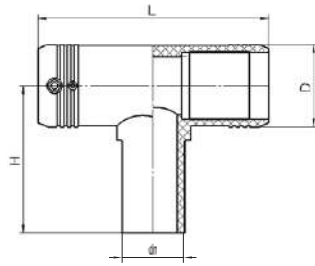
REDUCING SOCKET



Code	Size	D1	D2	L
21-EFRS-075063	75x63	94	81	130
21-EFRS-090063	90x63	111	81	142
21-EFRS-090075	90x75	111	94	142
21-EFRS-110063	110x63	136	81	150
21-EFRS-110075	110x75	136	94	152
21-EFRS-110090	110x90	136	111	154
21-EFRS-125063	125x63	154	81	152
21-EFRS-125075	125x75	154	94	154
21-EFRS-125090	125x90	154	111	156
21-EFRS-125110	125x110	154	136	156
21-EFRS-160063	160x63	193	81	177
21-EFRS-160075	160x75	193	94	177
21-EFRS-160090	160x90	193	111	177
21-EFRS-160110	160x110	193	136	177
21-EFRS-160125	160x125	193	154	177
21-EFRS-180110	180x110	180	110	195
21-EFRS-180125	180x125	180	125	210
21-EFRS-180160	180x160	180	160	195
21-EFRS-200090	200x90	242	111	200
21-EFRS-200110	200x110	242	136	200
21-EFRS-200125	200x125	242	154	200
21-EFRS-200160	200x160	242	193	200
21-EFRS-250110	250x110	300	136	241
21-EFRS-250160	250x160	300	193	241
21-EFRS-250180	250x180	250	180	215
21-EFRS-250200	250x200	300	242	241
21-EFRS-315160	315x160	377	193	245
21-EFRS-315200	315x200	377	242	245
21-EFRS-315250	315x250	377	300	245
21-EFRS-355200	355x200	355	200	270
21-EFRS-355250	355x250	355	250	270
21-EFRS-355315	355x315	355	315	260
21-EFRS-400200	400x200	400	200	265
21-EFRS-400250	400x250	400	250	265
21-EFRS-400315	400x315	400	315	270

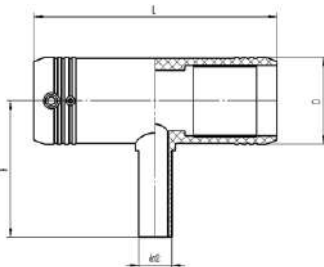
* (S) denotes Spigot Fitting

EQUAL TEE



Code	Size	D	dn	L	H
21-EFET-063	63x63	80	63	169	115
21-EFET-075	75x75	93	75	186	135
21-EFET-090	90x90	111	90	210	150
21-EFET-110	110x110	135	110	238	168
21-EFET-125	125x125	152	125	256	175
21-EFET-160	160x160	192	160	310	200
21-EFET-180	180x180	225	180	340	230
21-EFET-200	200x200	241	200	365	240
21-EFET-225	225x225	271	225	400	260
21-EFET-250	250x250	301	250	434	271
21-EFET-315	315x315	370	315	520	340
21-EFET-355	355x355	355	355	565	280
21-EFET-400	400x400	400	400	640	320

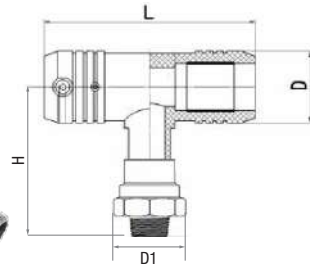
REDUCING TEE



Code	Size	D	dn2	L	H
21-EFRT-075063	75x63x75	94	63	186	117
21-EFRT-090063	90x63x90	111	63	210	126
21-EFRT-110090	110x90x110	111	75	210	144
21-EFRT-125090	125x90x125	136	63	215	152
21-EFRT-125110	125x110x125	136	75	215	152
21-EFRT-160090	160x90x160	136	90	238	168
21-EFRT-160125	160x125x160	153	63	239	165
21-EFRT-200110	200x110x200	153	75	239	169
21-EFRT-200160	200x160x200	153	90	239	172
21-EFRT-125110	125x110x125	153	110	256	172
21-EFRT-160063	160x63x160	195	63	248	183
21-EFRT-160075	160x75x160	195	75	250	188
21-EFRT-160090	160x90x160	195	90	250	192
21-EFRT-160110	160x110x160	195	110	305	192
21-EFRT-160125	160x125x160	195	125	307	196
21-EFRT-180063	180x63x180	180	63	355	210
21-EFRT-180075	180x75x180	180	75	355	210
21-EFRT-180090	180x90x180	180	90	355	210
21-EFRT-180110	180x110x180	180	110	355	210
21-EFRT-180125	180x125x180	180	125	410	210
21-EFRT-180160	180x160x180	180	160	410	210
21-EFRT-200063	200x63x200	242	63	297	195
21-EFRT-200075	200x75x200	242	75	297	200
21-EFRT-200090	200x90x200	242	90	297	210
21-EFRT-200110	200x110x200	242	110	365	215
21-EFRT-200125	200x125x200	242	125	365	215
21-EFRT-200160	200x160x200	242	160	360	215
21-EFRT-250090	250x90x250	299	90	432	255
21-EFRT-250110	250x110x250	299	110	432	256
21-EFRT-250160	250x160x250	299	160	432	267
21-EFRT-250200	250x200x250	299	200	432	275
21-EFRT-315160	315x160x315	370	160	410	298
21-EFRT-315200	315x200x315	370	200	410	317
21-EFRT-315250	315x250x315	370	250	410	335
21-EFRT-355200	355x200x355	355	200	410	300
21-EFRT-355250	355x250x355	355	250	660	330
21-EFRT-355315	355x315x355	355	315	570	300
21-EFRT-400200	400x200x400	400	200	460	325
21-EFRT-400250	400x250x400	400	250	560	330
21-EFRT-400315	400x315x400	400	315	560	330

* (F) denotes Fabricated Fitting
 * (S) denotes Spigot Fitting

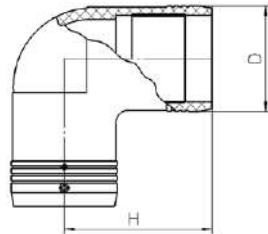
MALE TEE (FABRICATED)



* (F) denotes Fabricated Fitting

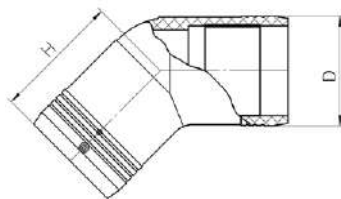
Code	Size	D	D1	L	H
21-EFFT-0900632	90x63x2"	111	80	210	191
21-EFFT-0900752½	90x75x2½"	111	105	210	224
21-EFFT-0900903	90x90x3"	111	130	210	247
21-EFFT-1100632	110x63x2"	136	80	215	217
21-EFFT-1100752½	110x75x2½"	136	105	215	232
21-EFFT-1100903	110x90x3"	136	130	238	265
21-EFFT-1600632	160x63x2"	195	80	248	248
21-EFFT-1600752½	160x75x2½"	195	105	250	268
21-EFFT-1600903	160x90x3"	195	130	250	289
21-EFFT-2000632	200x63x2"	242	80	297	260
21-EFFT-2000752½	200x75x2½"	242	105	297	280
21-EFFT-2000903	200x90x3"	242	130	297	307

EQUAL ELBOW



Code	Size	D	H
21-EFEE-063	63x63	80	97
21-EFEE-075	75x75	93	100
21-EFEE-090	90x90	110	119
21-EFEE-110	110x110	135	134
21-EFEE-125	125x125	152	142
21-EFEE-160	160x160	192	169
21-EFEE-180	180x180	225	185
21-EFEE-200	200x200	241	217
21-EFEE-225	225x225	271	225
21-EFEE-250	250x250	301	271
21-EFEE-315	315x315	370	277
21-EFEE-355	355x355	355	310
21-EFEE-400	400x400	400	320

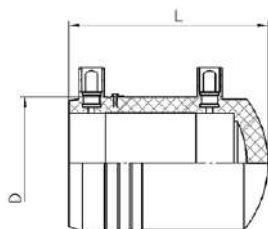
ELBOW 45°



* (S) denotes Spigot Fitting

Code	Size	D	H
21-EFE45°-063	63x63	80	77
21-EFE45°-075	75x75	93	77
21-EFE45°-090	90x90	110	95
21-EFE45°-110	110x110	135	99
21-EFE45°-125	125x125	152	102
21-EFE45°-160	160x160	192	115
21-EFE45°-180	180x180	222	141
21-EFE45°-200	200x200	241	155
21-EFE45°-225	225x225	271	155
21-EFE45°-250	250x250	301	206
21-EFE45°-315	315x315	370	210
21-EFE45°-355	355x355	355	210
21-EFE45°-400	400x400	400	220

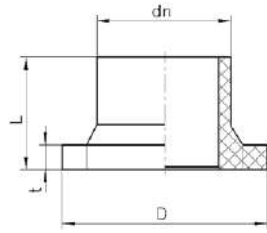
END CAP



* (S) denotes Spigot Fitting

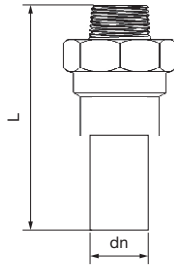
Code	Size	D	L
21-EFEC-063	63	80	80
21-EFEC-075	75	93	95
21-EFEC-090	90	110	95
21-EFEC-110	110	135	105
21-EFEC-125	125	166	112
21-EFEC-160	160	192	130
21-EFEC-180	180	216	138
21-EFEC-200	200	241	145

FLANGE ADAPTOR (LONG SPIGOT) PN16



Code	Size	D	dn	L	t
21-EFFA-063	63	102	63	88	12
21-EFFA-075	75	122	75	95	15
21-EFFA-090	90	138	90	100	17
21-EFFA-110	110	158	110	110	18
21-EFFA-125	125	158	125	120	18
21-EFFA-160	160	212	160	130	25
21-EFFA-180	180	212	180	145	30
21-EFFA-200	200	268	200	155	32
21-EFFA-225	225	268	225	155	32
21-EFFA-250	250	320	250	165	35
21-EFFA-315	315	370	315	175	38
21-EFFA-355	355	430	355	185	42
21-EFFA-400	400	482	400	215	48

SPIGOT MALE SOCKET (FABRICATED)



Code	Size	dn	L
21-EFSMSF-0632	63x2"	63	190
21-EFSMSF-0752½	75x2½"	75	207
21-EFSMSF-0903	90x3"	90	227

Electrofusion Installation Procedures



1 Cut pipe square using a pipe cutter or a saw.



2 Mark the insertion depth on the pipe outer surface.



3 Peel or scrap the pipe surface between the insertion depth & the pipe end.



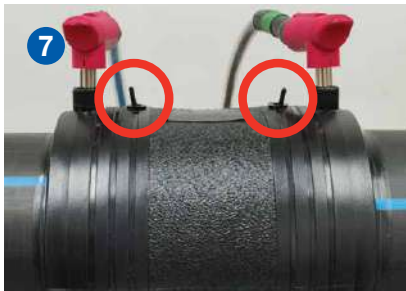
4 Then clean the joint surface area.



5 Insert the pipe into the fittings openings until it reaches the stopper inside the fitting. Make sure that the pipe is not too loose or tight in the fitting.



6 Plug in the terminal cables into the terminals on the fitting. Either scan the barcode or key-in the joint parameters manually.



7 Switch on the fusion machine. The fusion process is taking place. Do not disturb the fusion process. Pins will protrude out at the indicator to indicate that the process is completed.

Product Warranty

Azeeta Pipe System Sdn Bhd warrants its products to be free of defects in workmanship and under normal use, service and when used for the purpose under the conditions for which they are intended.

This warranty shall not apply to any Azeeta Pipe System products that has been altered, repaired or used in any way, stored outside or has been subjected to misuse, negligence, accidental or has not been installed in accordance with installation instructions.

The obligation of Azeeta Pipe System Sdn Bhd under this warranty shall be limited to the replacement of any part that may be prove defective under normal use.

Installation instructions must be adhered to or our product warranty is null and void. Installation of socket fusion fittings must be performed by trained and qualified technician.

Azeeta Pipe System Sdn Bhd has the right to inspect the said material and purchaser shall, if requested, return defective product to Azeeta Pipe System Sdn Bhd. Purchaser shall assume all responsibility and expenses for removal, reinstallation and freight charges in connection with above matter.

Azeeta Pipe System Sdn Bhd shall not to be liable for directly, special, incidental or consequential damage or penalties and does not assume any liability of purchase to others or to anyone for injury to persons and/or property.

Any claims regarding shortage or damages from the product's delivery must be submitted in writing to our company within 7 working days after receipt of products. Buyer shall note losses or damages or discrepancy on delivery order and provide a delivery receipt starting such with driver's signature.

All purchases are responsible for passing on this limited warranty to their respective customers.

AZEETA[®]

Complete Thermoplastic Piping System

Azeeta Pipe System Sdn Bhd (455260-W)

Sales Office:

No. 9, Jalan Anggerik Mokara 31/59, Kota Kemuning,
40460 Shah Alam, Selangor Darul Ehsan.

Tel: (+603) 5121 8987 (Hunting Line), 5121 8845, 5121 7846

Fax: (+603) 5121 8978

Factory:

Lot 12694, Jalan TJ 2/3, Tuanku Ja'afar Industrial Park,
Sungai Gadut, 71450 Seremban, Negeri Sembilan.

www.azeetapipe.com